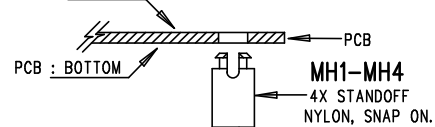


REVISION HISTORY				
ECO	REV	DESCRIPTION	APP. ENG.	DATE
-	1	PRODUCTION	PATRICK W.	01-16-19

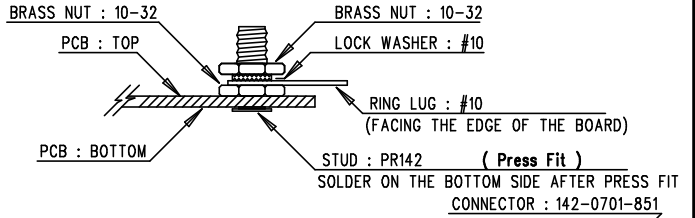
NOTES: UNLESS OTHERWISE SPECIFIED

1. WORKMANSHIP SHALL BE IN ACCORDANCE WITH IPC-A-610.
2. ASSEMBLY PROCESS SHALL INCLUDE: REFLOW SOLDER TOP SIDE SMD. MAXIMUM SOLDER TEMPERATURE IS 240 DEGREES CELSIUS.
3. PARTS TO OMIT WILL BE SPECIFIED ON THE BILL OF MATERIALS. LOCATIONS OF OMITTED PARTS SHALL BE FREE OF SOLDER. MASK THE SOLDER STENCIL WHERE SMT PARTS ARE OMITTED.
4. INSTALL SHUNTS AS SHOWN.
5. DEPANELIZE BOARDS AFTER ASSEMBLY AND ROUTE-OUT THE BREAKOUT TABS ON FOUR SIDES OF THE BOARD EDGE.
6. DO NOT APPLY ANY KIND OF ASSEMBLY STAMP OR QA STAMP TO ANY BOARD.
7. INSTALL 4 STANDOFFS AS SHOWN BELOW:

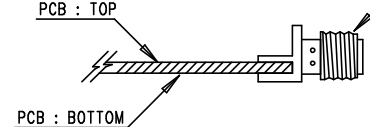
PCB : TOP



8. INSTALL J2 AND J3 AS SHOWN BELOW:



11. INSTALL J1 AS SHOWN BELOW:



APPROVALS

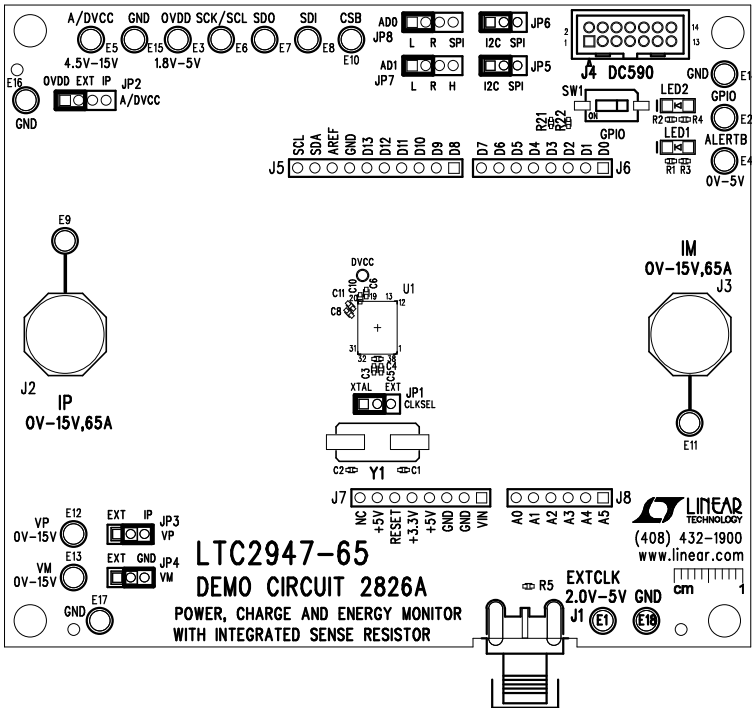
PCB DES.	SEAN M.
APP ENG.	PATRICK W.



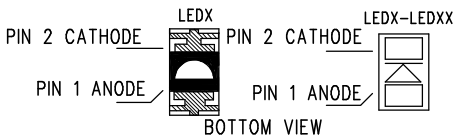
1630 MCCARTHY BLVD
MILPITAS, CA 95035
PH: (408) 432-1900
www.linear.com
LTC CONFIDENTIAL -
FOR CUSTOMER USE ONLY

TITLE: TOP ASSEMBLY DRAWING
POWER, CHARGE AND ENERGY MONITOR
WITH INTEGRATED SENSE RESISTOR

SIZE	IC NO.	LTC2947-65	REV.
N/A	DEMO CIRCUIT 2826A	1	
SCALE = NONE	FILENAME:	DC2826A.PCB	SHT 1 OF 2



9. INSTALL LED1, LED2 AS SHOWN BELOW:



10. INSTALL TURRETS AS SHOWN BELOW:
TURRETS : MILL-MAX 2308-2-00-80-00-00-07-0

